

Combined Counties League Premier Division Saturday 11 December 2014 – Kick-off 3.00pm			
Epsom & Ewell (Royal blue and white shirts, Blue shorts)		v.	Farnham Town (Yellow shirts, Yellow shorts)
1	Kieran CAMPBELL	1	Richard OSSAI
2	Sam CURRIE	2	Simon WRIGHT
3	Jamie HATFIELD (Capt)	3	Ben WILLIAMS
4	Alex McKAY	4	Lee MARKER
5	George MURPHY	5	Matthew WHEELER
6	Nathan AYLING	6	Adam WAREHAM
7	Ben HAYWARD	7	Joe SAMUELS
8	Karl DOUGLIN	8	Rob WEBB
9	James COTTEE	9	Mark CORBETT
10	Kyle HOUGH	10	Craig SMITH
11	Alex McGREGOR	11	Ian DYER
12	Matt SMITH	12	Darren WILSON
14	Carl DOWNS	14	Jack DILLON
15	Freddie MYERS	15	Neville TUCK
16	Anthony PANAYI	16	Matthew BUNYAN
17	James TAYLOR	17	
18	Ali DEWAR	18	
Manager: Lyndon Buckwell Assistants: Glynn Mandeville and Tony Coombe Player-Coach: Russell Banyard Physio: Ken Jones		Manager: Paul Tanner Coaches: Sean Birchnall Physio:	

Referee: Nick Brown (Kingston-upon-Thames)

Assistants: Keith Corrick (Oxted), Michael Stevens (Morden)

To sponsor a match or match ball, please see Page 14

Next Home match
Combined Counties League – Premier Division
Epsom & Ewell v. Alton Town
on Saturday 25 January 2014 at 3.00pm



Welcome to

Epsom & Ewell **v. Farnham Town** **Saturday 11 January 2014**

We welcome all of you to High Road today for today's match with Farnham Town, including the Farnham Town committee, supporters and players, our match officials and all our own regular supporters. I always enjoy our visits to Farnham and trust we can reciprocate their excellent hospitality.

We visited Farnham back on Saturday 12 October and with the vagaries of the weather and the fixture list our 0-3 defeat there was our last league defeat. It was one of those games on the balance of territorial play was quite even but we contributed to our own downfall that day with poor goals given away, but Farnham deserved their win. They have had good results against other of the top sides in the league and should not be taken lightly.

Our only hope at time of writing is that we hope the weather will have relented enough for this fixture to be played. This Chipstead pitch has a great record of playing when others are waterlogged but even here there have been postponements. We extend our sympathies to anyone adversely affected by the flooding in recent weeks. We think especially of our neighbours in the local footballing community at Leatherhead FC where volunteer working parties were making good progress only for the flood waters to return a second time.

Our own form even with the interruptions is good at present sitting on a run of five wins, as I have said before in virtually all of the games our opponents have tested us on this run and no game should be considered easy. We have some rearranged games coming up with a trip to Raynes Park Vale on Tuesday our, Westfield next Saturday and the rearranged League Cup tie at South Park on Tuesday 21 January. The much anticipated Premier Division game postponed last Saturday has now been rearranged for Tuesday 18 February, so two very big games to look forward to there.

Enjoy the game!

Steve Dyke
Epsom & Ewell Football Club Programme Team

**James Taylor watches the ball fly past the Horley Town keeper
on Saturday 04 January 2014 by Gemma Jarman**



Cherry Red Records Combined Counties League Premier Division Table 2013-2014

Pos	Team	P	W	D	L	F	A	GD	Pts
1	South Park	21	17	1	3	67	23	+44	52
2	Epsom & Ewell	21	15	2	4	47	24	+23	47
3	Camberley Town	21	14	3	4	48	21	+27	45
4	Windsor	22	14	3	5	55	33	+22	45
5	Westfield	23	13	2	8	41	28	+13	41
6	Molesey	23	11	6	6	44	23	+21	39
7	Farnham Town	22	11	4	7	33	29	+4	37
8	Raynes Park Vale	22	10	4	8	39	39	+0	34
9	Wembley	22	9	5	8	33	30	+3	32
10	Badshot Lea	21	9	5	7	35	43	-8	32
11	Hanworth Villa	20	8	7	5	43	33	+10	31
12	Frimley Green	22	9	3	10	39	46	-7	30
13	Croydon	23	9	3	11	37	46	-9	30
14	Mole Valley SCR	24	8	4	12	42	60	-18	28
15	Hartley Wintney	18	8	2	8	36	32	+4	26
16	Ash United	23	6	3	14	34	43	-9	21
17	Colliers Wood United	25	5	6	14	36	51	-15	21
18	Chessington & Hook Utd	20	6	3	11	33	51	-18	21
19	Cove	19	6	1	12	38	41	-3	19
20	Horley Town	23	5	4	14	32	60	-28	19
21	Alton Town	24	4	5	15	30	56	-26	17
22	Bedfont Sports	23	2	8	13	21	51	-30	14

Table dated: Saturday 28 December 2013

Note: All games on Saturday 4 December 2014 (Postponed).

Top Shots 2013-2014 Season

Photos by Gemma Jarman



Above: Mark Jarman tries to get the ball over the line in the 5-3 Horley Town win.



Left: Kyle Hough skips over a Horley Town defender.

Below: Mark Jarman strides past the Horley Town keeper.



View Lauren and Gemma Jarman's photos on the Club's website at

<http://www.epsomandewellfc.co.uk>

EEFC Player in focus – George Murphy

Photos by Gemma Jarman

Left: George Murphy heads towards goal in the home game against Frimley Green



Right: George Murphy's scores his first goal for Epsom at Hanworth Villa.

Below: George Murphy defending at the Bedfont Sports home game.



Position:
Defender

Appearances:
This season= 17
Total = 27

Goals
This season = 2
Last season = 2

The Manager

Welcome to today's league game with Farnham Town.

We go into the new year sitting in second place in the Premier Division Table and looking for another 3 points to keep us in touch with South Park at the top but it won't be easy as Farnham are a good side as we found out earlier in the season when we were beaten 3-0. That day we didn't get going until the second half but by then it was too late so I'm hoping for a better start and overall performance this afternoon from us, and a couple of slip ups from our rivals elsewhere wouldn't go a miss either.



I think there's still four or five teams that are capable of putting a run together and winning the league this season and I think we're one of them so let's hope we can keep this little run going and get the new year started with a win.

Enjoy the game!

Lyndon

EEFC Twitter

follow us on
twitter



We now have 1,008 Followers!

The Club are very pleased to announce that we now have over 1,000 Followers!

You can follow Epsom & Ewell Football Club by visiting our Twitter page:

<http://twitter.com/EEFCWebmaster#>

and clicking on the Follow button.

Farnham Town FC History



Farnham Town Football Club was established in 1906 through the merging of Farnham Bungs (the Farnham Brewery) and the Farnham Star. The club was one of the founder members of the London Spartan League in 1975. They reached the Fourth Round of the FA Vase in the 1976/77 season.

At the end of the 1979/80 season Farnham Town left the London Spartan League and applied to the Combined Counties League, their application was accepted and they finished 4th in their first season. The 1986/87 season saw Farnham take second place to Ash United in the league campaign. The glory days finally arrived in the 1990/91 season when the club won the league title. In the 1991/92 season, the Town got a clean sweep of the major trophies by winning the Combined Counties Premier League, the Dan Air Elite Cup and the Dan Air Challenge Cup. Having won the league, the club applied and were accepted to the Diadora League, however funds for necessary ground improvements could not be generated which resulted in the club not having a league to play in for the 1992/93 season.

In 1993/94 Farnham Town were accepted back into the Combined Counties League where they continue to ply their trade. From 1995-1998 Farnham finished in the top six of the Premier Division for three consecutive seasons, in 1998-99 they finished in 13th position, then 10th in 1999-2000 before suffering relegation from the Premier Division in 2000-2001 season. They bounced straight back the following season but then endured four tough seasons back in the Premier Division, with bottom four finishes every season culminating in relegation back down to Division One in 2005-2006. Again the club bounced straight back and in 2006-2007 they won the Division One title under the guidance of Barry Bridger, but were denied promotion due to the Memorial Ground not meeting the desired grading by the league. The club then spent another four seasons in Combined Counties Division One.

Farnham gained promotion from Combined Counties Division One in the 2010-2011 season after finishing second behind Worcester Park. Paul Tanner's side also won the Combined Counties Fair Play Award for 2010-2011 after going the whole season without having a man sent off. Also in their ranks, they had the league's top scorer for the season in the prolific Mark Corbett who amassed a career best of 32 league goals in 34 league matches to propel Farnham to promotion after signing from Sandhurst in the Summer of 2010.

In a very successful year for the club on the whole, Dean Nelson's reserve side finished second behind Mole Valley in the Combined Counties Reserve Division, improving on fourth position the previous season. Farnham ladies also finished second in their respective league to cap quite a remarkable season in Geoff Chapple's final season as Chairman. The chairman of Farnham Town for 2011-2012 is Ray Bridger replacing Geoff Chapple, who previously managed Woking and Kingstonian and because of his continued involvement with Blue Square Bet South side Woking coupled with Farnham Town's promotion back to the Combined Counties top-flight, Geoff is ineligible to continue both roles.

Pitch Squares Fundraising Grid

There are 200 squares and they cost £10 each. For businesses 1 square = business name and location, 2 squares = business and phone number, 3 squares = business name, phone number and a line of text, 4 squares = business name, logo, phone number and a line of text. Visit the website for a zoom-able image of the pitch.

Total raised so far £230

11	12	13	Ink Plus Barnett Wood Lane	15	16	17	The Carter Family	19	20
31	32	33	34	35	36	37	38	39	40
51	52	53	54	Epsom Coaches 01372 731 705		57	58	59	60
71	72	73	74	75	76	77	78	79	80
91	92	dlp Builders 07816 86 52 59			96	97	98	99	100
111	112	113	114	115	116	117	118	119	120
131	132	133	134	Ian Twyford Borders 07976 157 488		137	138	139	140
151	152	153	154	155	156	157	158	159	160
171	172	173	174	The Rifleman Pub	176	177	178	179	180
191	192	193	194	195	196	197	198	199	Steve Dyke

Pitch Squares Fundraising Grid

Take part in our new fundraising initiative. Buy squares and your name or business name will be added to the pitch in the programme and on the website. To buy squares, speak to a member of the Committee or email:

Steve Dyke at: helen@helenandsteve.fsnet.co.uk
or EEFC Webmaster: webmastereefc@btinternet.com

1	2	Epsom & Ewell Colts			6	7	8	9	10
21	22	 lovettfamily@ntlworld.com U8s to U18s			26	27	28	29	30
41	Peachey's News	43	44	45	46	Ladysafe & Sons 020 8393 8100		49	50
61	62	63	64	65	66	67	68	69	70
81	Dave Abbot - Master Joiner 07949 114 727 020 8668 4432				86	87	88	89	90
101	102	103	104	105	106	107	108	109	110
121	122	123	124	125	126	Riverford Organic Foods 01903 892116		129	130
141	142	143	144	145	146	147	148	149	150
161	162	163	164	Carole & Brian Carter	166	167	168	169	170
Gent's Barbers Manor Green Rd	182	183	184	185	186	187	188	189	190

League Match Report

Epsom & Ewell 5-3 Horley Town

Combined Counties League Premier Division – Saturday 28 December 2013

After the early exchanges, Epsom took the lead on 12 minutes. A corner on the right saw the ball ping pong around the Horley area and eventually end up in the net to give the Es a 1-0 lead with the goal being given to Nathan Ayling. Two minutes later, Kieran Campbell comfortably watched a free kick clear his crossbar before James Cottee's left footed drive hit the side netting on 18 minutes.

A minute later, Campbell threw himself across the goal to guide a Williams' left footer past his near post. Cottee broke the offside trap after 22 minutes, strode towards goal and when it looked simpler to score, the keeper saved his shot easily.

Douglin was booked after 24 minutes for taking a shot that hit the far post after the referee had already blown for offside. With Horley wasting several free kicks, Hough had a chance to score, rounding the keeper on 39 minutes only to see a defender clear the ball off the line.

With a minute to the break, Horley's Ashley Nadesan went one on one with Campbell and just when it looked like an equaliser would come, Campbell made a superb double save to thwart the danger.

Half-Time: Epsom & Ewell 1-0 Horley Town

The second half started with the same positive tempo, with Karl Douglin heading wide on 47 minutes and a header from a Horley corner, on 48 minutes, hit Epsom's crossbar before being cleared. However, parity was restored on 49 minutes when another Horley corner resulted in Nathan Jupp scrambling the ball home for 1-1.

Two minutes later, Mark 'Jarmo' Jarman shot into the side netting on the run before Epsom then restored their lead on 53 minutes as Cottee dribbled past three defenders on the left edge of the area and drilled the ball past the keeper into the bottom right hand corner for 2-1.

On the hour, Jarmo beat the offside trap only to shoot against the keeper, the rebound fell back to him and he crossed it but it evaded everyone. Two minutes later, Sam Currie played the ball into the area, the ball rebounded out and Cottee fastened onto the ball and slammed it home for 3-1. Horley wasted two more efforts and then hit the post on 66 minutes. Jarmo then had two more chances before he made it 4-1 on 76 minutes. Cottee streaked down the left, ghosted past two defenders and crossed in low, just as Jarmo got in front of his marker to slot the ball home.

With nine minutes left, Cottee fed Hough and he had no hassle shooting through the keepers arms, low and hard, from the edge of the area, making it 5-1.

With three minutes left, Horley's Harry Williams' low shot beat Campbell at his near post for the visitor's second goal and two minutes into injury time, Myers was caught out of position and John Eldred took advantage to shoot home from a right wing cross to reduce the arrears to 5-3.

Full-Time: Epsom & Ewell 5-3 Horley Town

Match Report by George Holland

Reserve Round-up

Surrey Elite Intermediate League – Reserve Division (Up to Saturday 28 December 2013)

Pos	Team	P	W	D	L	F	A	GD	Pts
1	Worcester Park Res	14	8	2	4	41	26	+15	26
2	Abbey Rangers Res	13	8	2	3	34	26	+8	26
3	Epsom & Ewell Res	12	7	2	3	40	22	+18	23
4	Virginia Water Res	12	6	3	3	21	16	+5	21
5	Epsom Athletic Res	13	5	3	5	37	30	+7	18
6	Farleigh Rovers Res	11	5	2	4	26	20	+6	17
7	Ripley Village Res	12	5	2	5	30	26	+4	17
8	Battersea Ironsides Res	13	4	5	4	26	25	+1	16
9	Tooting Bec Res	13	4	1	8	25	55	-30	15
10	Sheerwater Res	13	2	5	6	25	35	-10	13
11	Horsley Res	10	4	1	5	21	21	+0	12
12	Mole Valley SCR Res	13	3	3	7	21	38	-17	12
13	Reigate Priory Res	13	2	5	6	25	32	-7	11

Epsom & Ewell Reserves – Results (SCIC) County Cup, (CC) Challenge Cup, (W) Withdrawn

Sat 7 Sep 2013	Tooting Bec Res	0-6	Epsom & Ewell Res	SEILR
Sat 14 Sep 2013	Epsom & Ewell Res	1-1	Virginia Water Res	SEILR
Sat 21 Sep 2013	Battersea Ironsides Res	4-3	Epsom & Ewell Res	SEILR
Sat 28 Sep 2013	Epsom & Ewell Res	4-3	Worcester Park Res	SEILR
Sat 5 Oct 2013	Epsom & Ewell Res	2-5	Ripley Village Res	SEILCC1
Sat 12 Oct 2013	Mole Valley SCR Res	2-1	Epsom & Ewell Res	SEILR
Sat 19 Oct 2013	Epsom & Ewell Res	12-1	Coulsdon Town Res (W)	SEILR
Sat 26 Oct 2013	Epsom & Ewell Res	4-4	Epsom Athletic Res	SEILR
Sat 2 Nov 2013	Epsom & Ewell Res	4-1	Farleigh Rovers Res	SEILR
Sat 9 Nov 2013	Epsom & Ewell Res	3-0	Reigate Priory Res	SEILR
Wed 13 Nov 2013	Cobham Res	0-2	Epsom & Ewell Res	SCIC1
Sat 23 Nov 2013	Abbey Rangers Res	4-3	Epsom & Ewell Res	SEILR
Sat 30 Nov 2013	Epsom & Ewell Res	5-0	Sheerwater Res	SEILR
Sat 7 Dec 2013	Virginia Water Res	1-2	Epsom & Ewell Res	SEILR
Sat 14 Dec 2013	Epsom & Ewell Res	1-2	Westminster Casuals	SCIC2
Sat 21 Dec 2013	Epsom & Ewell Res	4-2	Mole Valley SCR Res	SEILR

First Eleven Appearances and Goals

Name	Debut	2013-2014				Career Totals			
		App	Sub	Total	Goals	App	Sub	Total	Goals
Nathan AYLING	15.11.2008	22	3	25	2	94	23	117	9
Robbie BURNS	14.08.2007	7	2	9	1	202	14	216	122
Kieran CAMPBELL	29.09.2012	28	0	28	0	30	0	30	0
James COTTEE	26.11.2011	9	2	11	6	30	7	37	19
Sam CURRIE	04.08.2012	26	1	27	1	75	3	78	2
Ali DEWAR	29.10.2011	4	7	11	1	36	26	62	5
Karl DOUGLIN	03.08.2013	24	2	26	8	24	2	26	8
Carl DOWNS	17.09.2011	18	3	21	0	76	9	85	2
Jake DOWNS	29.10.2013	4	1	5	0	4	1	5	0
Russell HARTT	10.08.2013	1	1	2	0	1	1	2	0
Jamie HATFIELD	11.11.2006	22	1	23	0	228	12	240	6
Ben HAYWARD	07.03.2007	21	2	23	1	227	26	253	17
Jordayne HENRY	10.08.2013	2	1	3	0	2	1	3	0
Kyle HOUGH	14.08.2007	28	0	28	20	253	11	264	136
Reece JACKSON *	03.08.2013	4	2	6	2	4	2	6	2
Mark JARMAN	08.08.2009	15	5	20	13	112	44	156	65
Richard LEDIJU	13.08.2013	0	3	3	0	0	3	3	0
Dale MARVELL *	15.01.2000	0	1	1	0	250	40	290	80
Alex MCGREGOR	08.08.2009	18	5	23	5	136	50	186	21
Alex MCKAY	20.12.2008	12	4	16	3	53	19	72	5
George MURPHY	19.03.2013	16	1	17	2	25	2	27	2
Antony MYERS	23.12.2006	9	4	13	1	67	27	94	7
Anthony PANAYI	14.11.2010	17	3	20	2	114	12	126	4
Matte PIERSON	09.10.2013	1	0	1	0	1	0	1	0
Montell SHAW	N/A	0	0	0	0	0	0	0	0
Matt SMITH	08.08.2009	0	13	13	0	86	37	123	10
James TAYLOR	26.08.2013	11	2	13	0	11	2	13	0

Up to and including: **HORLEY TOWN** (CCLP) (Saturday 28 December 2013) (29 games)

* No longer at the club.

This Season's Match Sponsors

Opponent	Date	Match Sponsor	Ball Sponsor
Westfield	06.08.2013	Epsom & Ewell FC Committee	
Whyteleafe (FA Cup)	21.08.2013	"Boys at the half-way line"	Peter Beddoe
Croydon	26.08.2013	Marvin Hough	
Bedfont Sports	07.09.2013	Geoff and Steve Dyke	
Chessington & Hook	14.09.2013		John Ward
Whyteleafe (FA Vase)	21.09.2013	Paul Merritt	
Wembley	24.09.2013		
Badshot Lea	05.10.2013		
Raynes Park Vale	15.10.2013	Tony Jeffcoate	
Frimley Green	19.10.2013	The Jarman Family	
Chertsey Town (SSC)	23.10.2013	Mark and Carmel Murphy	
Chipstead (SCC)	29.10.2013		
Mole Valley SCR	30.11.2013	In Memory of Doug and Liz Burns	
Hartley Wintney	10.12.2013		
Windsor	21.12.2013	EEFC Reserves	
Horley Town	28.12.2013		
Farnham Town	11.01.2014		
Alton Town	25.01.2014		
Cove	08.02.2014		
Molesey	01.03.2014	John Herbert	
Colliers Wood United	08.03.2014	Joe Hagan P.G.A. Golf Professional 01932 267666	
Ash United	22.03.2014		
Camberley Town	05.04.2014		
South Park	19.04.2014		
Hanworth Villa	26.04.2014		

If you like to sponsor a match or the match ball this season, please contact a Committee Member for details. Cost £40 (match) includes two free tickets and two matchday programmes, £25 (match ball) includes one free ticket and one matchday programme.

Epsom & Ewell Football Club
would like to thank all the above sponsors for their support!

Steve Dyke

My top 5 Football grounds

Okay, last Saturday was wet even by the standards of wet we've become used to over this soggiest of Christmas periods! I do like to have a game to go to on Saturday though. It's the centre point of my week. It doesn't feel right staying in, battling with the kids for a bit of red button time. It was looking bleak to find a game in the South East but I did. St Albans City v Frome Town amazingly survived the regional soaking ... and I was there!



There was an article in the programme about a survey of non league fans' favourite grounds they've been to and asked readers to identify their top 5. I thought there's nothing non league fans like talking about more than that so I'll pass it on. Once I started thinking about it, the difficulty was limiting myself to just 5. So, in no particular order here's the Dyke Top 5.

St Albans City (Clarence Park) – I know it's recent effect but I absolutely loved the place. Set in a public park, a lovely big old-fashioned ground with an old shallow stand the length of the pitch, banks of terracing either end and a covered side. A bonus is its being next to the railway. The times I went past it on the way to Sheffield and didn't realise the treasure that was there.

Bacup & Rossendale Borough (West View) – A beautifully situated but slightly ramshackle ground, up in the hills of Rossendale. Dry stone walls separate two sides of the ground from sheep in the moorland fields. I saw a great 3-3 FA Cup tie with AFC Blackpool there which was full of incident.

Frickley Athletic (Westfield Lane) – Again, a rose tinted view as my only visit was the highpoint in their history, a third round FA Cup tie with Rotherham United. It was just after the miners' strike and the hospitality and friendliness to us as southerners was first class.

Horley Town (The New Defence) – I thought I'd select one more modern ground rather than the traditional. I really like the view over the pitch from the clubhouse and as a bonus, Epsom have a really good record there. This closely edged out Westfield who we visit next week.

Epsom & Ewell (West Street) – Not the most special ground architecturally but so many memories. Taking the kids recently to Gibraltar Recreation Ground, those houses still look wrong there and any pictures or video footage I see, still gives me a big emotional response.

If anyone wants to take part in the survey you can do so via twitter to @mike_bayly

CCL Premier Division Clubs – Results

Friday 27 December 2013

Combined Counties League – Premier Division

Alton Town	1-1	Farnham Town	170
------------	-----	--------------	-----

Saturday 28 December 2013

Combined Counties League – Premier Division

Ash United	P-P	Badshot Lea	
Camberley Town	1-0	Hartley Wintney	115
Colliers Wood United	5-1	Chessington & Hook United	55
Croydon	2-5	Mole Valley SCR	42
EPSOM & EWELL	5-3	Horley Town	87
Frimley Green	2-1	Cove	61
Hanworth Villa	2-2	Molesey	127
Wembley	0-0	Bedfont Sports	57
Westfield	5-2	Windsor	231

Saturday 4 January 2014

All matches involving Combined Counties League Premier Division clubs were postponed due to waterlogged pitches.

Tuesday 7 January 2014

Combined Counties League – Premier Division

Chessington & Hook United	P-P	Cove	
---------------------------	-----	------	--

Southern Combination Cup – 3rd Round

Hanworth Villa	P-P	Molesey	
----------------	-----	---------	--

Wednesday 8 January 2014

Cherry Red Records Premier Challenge Cup – 2nd Round

Croydon	5-0	Dorking	
---------	-----	---------	--

Player Sponsorship (Cont.)



Ben Hayward

Awaiting sponsor



Karl Douglin

Jeff and Arnold Pye



Alex McGregor

Joe Hagen PGA Golf
01932 267666



James Taylor

Awaiting sponsor



Kyle Hough

EEFC Webmaster



Matt Smith

Awaiting sponsor



Carl Downs

Awaiting sponsor



George Murphy

Mr & Mrs Bexley



Ali Dewar

ID & JD Services Limited



Antony Myers

Awaiting sponsor



Mark Jarman

Ann Summers Ltd



Robbie Burns

Charles Bowry MM

If you would like to sponsor a player this season, please speak to a member of the Committee. Cost per player £40 for the season.

Player Sponsorship



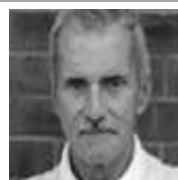
Lyndon Buckwell
(Manager)

Ezara Beddoe



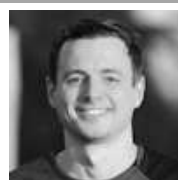
Glynn Mandeville
(Assistant Manager)

Awaiting sponsor



Ken Jones
(Physio)

Awaiting sponsor



Jamie Hatfield
(Captain)

Peter Lumm



Sam Currie

John Bonner



Alex McKay

George Holland of
Epsom Hospital Radio



Tony Coombe
(Assistant Manager)

Awaiting sponsor



Russell Banyard
(Player-Coach)

Awaiting sponsor



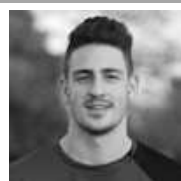
Jamie McConnell
(Kit man)

Awaiting sponsor



Kieran Campbell

Up and Out Lofts Ltd.



Anthony Panayi

Douglas Burns and
Paul Marshall



Nathan Ayling

Mr Ayling

If you would like to sponsor a player this season, please speak to a member of the Committee. Cost per player £40 per season.

CCL Premier Division Clubs – Fixtures

Saturday 11 January 2014

Combined Counties League – Premier Division

Alton Town	v.	Windsor	15.00
Badshot Lea	v.	Cove	15.00
Camberley Town	v.	Croydon	15.00
Colliers Wood United	v.	Westfield	15.00
EPSOM & EWELL	v.	Farnham Town	15.00
Frimley Green	v.	Bedfont Sports	15.00
Hanworth Villa	v.	Raynes Park Vale	15.00
Horley Town	v.	Hartley Wintney	15.00
Mole Valley SCR	v.	South Park	15.00
Molesey	v.	Chessington & Hook United	15.00
Wembley	v.	Ash United	15.00

Tuesday 14 January 2014

Combined Counties League – Premier Division

Cove	v.	Windsor	19.45
Hanworth Villa	v.	Hartley Wintney	19.45
Molesey	v.	Croydon	19.45
Raynes Park Vale	v.	EPSOM & EWELL	19.45
Westfield	v.	Alton Town	19.45

Wednesday 15 January 2014

Cherry Red Records Premier Challenge Cup – 2nd Round

Chessington & Hook United	v.	Wembley	19.45
---------------------------	----	---------	-------

Saturday 18 January 2014

Combined Counties League – Premier Division

Alton Town	v.	Camberley Town	15.00
Ash United	v.	Chessington & Hook United	15.00
Bedfont Sports	v.	Molesey	15.00
Cove	v.	Wembley	15.00
Croydon	v.	Hartley Wintney	15.00
Farnham Town	v.	Frimley Green	15.00
Raynes Park Vale	v.	Mole Valley SCR	15.00
South Park	v.	Colliers Wood United	15.00
Westfield	v.	EPSOM & EWELL	15.00
Windsor	v.	Badshot Lea	15.00

Fixtures, Results and Line-ups 2013-2014

Key: CCL – Combined Counties League Premier Division, **CCL PCC** – Combined Counties League Premier Challenge Cup, **FAC** – FA Challenge Cup, **FAV** – FA Challenge Vase, **SSC** – Surrey Senior Cup
SCC – Southern Combination Cup
 Number in brackets after name denotes player who was substituted. Epsom & Ewell score noted first.

No	DATE	DAY	COMP	H/A	OPPONENTS	F/T	90m	H/T	SCORERS	1	2	3	4	5	6	7	8	9	10	11	SUB 1	SUB 2	SUB 3	ATT
1	03.08.2013	Sat	CCLP	A	Alton Town	1-0		0-0	Panayi	Campbell	Currie	Hatfield	Panayi	McKay	Ayling	Hayward	Douglin	Jackson	Hough	McGregor	Smith (2)	Marvell (11)		97
2	06.08.2013	Tue	CCLP	H	WESTFIELD	2-1		1-0	McKay (2)	Campbell	Currie	Hatfield	Panayi	McKay	Ayling	Hayward	Douglin	Jackson	Hough	McGregor	Smith (8)	Burns (9)		71
3	10.08.2013	Sat	CCLP	A	Mole Valley SCR	3-0		2-0	McGregor, Hough (2, 1 pen)	Campbell	Currie	Hatfield	Panayi	Hartt	Ayling	Hayward	Downs	Burns	Hough	McGregor	Myers (11)	Henry (10)	Murphy (4)	43
4	13.08.2013	Tue	CCLP	A	Camberley Town	2-0		0-0	Dewar, Hough	Campbell	Currie	Hatfield	Panayi	McKay	Ayling	Hayward	Downs	Burns	Hough	Dewar	Lediju (11)			91
5	17.08.2013	Sat	FAC EP	A	Whyteleafe	3-3		3-1	Myers, Hough, Jackson	Campbell	Currie	Hatfield	Panayi	Murphy	Douglin	Hayward	Downs	Burns	Hough	Myers	Jackson (7)	Smith (11)		118
6	21.08.2013	Wed	FAC EPR	H	WHYTELEAFE	1-6		0-3	Hough (pen)	Campbell	Currie	Hatfield	Panayi	Murphy	Douglin	Dewar	Downs	Burns	Hough	Myers	Jarman (7)	McGregor (11)	Ayling (8)	93
7	24.08.2013	Sat	CCLP	A	Cove	3-0		1-0	McGregor, Ayling, Hough	Campbell	Currie	Hatfield	McKay	Murphy	Ayling	Hayward	Douglin	Jackson	Hough	McGregor	Smith (2)	Downs (6)	Hartt (8)	48
8	26.08.2013	Mon	CCLP	H	CROYDON	2-0		1-0	Douglin, Jackson	Campbell	Currie	Hatfield	McKay	Murphy	Downs	Hayward	Douglin	Jackson	Hough	McGregor	Taylor (5)	Smith (9)	Burns (11)	57
9	31.08.2013	Sat	CCLP	A	Ash United	3-2		2-2	Hough (2), Burns	Campbell	Currie	Hatfield	McKay	Murphy	Downs	Hayward	Douglin	Burns	Hough	McGregor	Jarman (11)	Ayling (7)		76
10	07.09.2013	Sat	CCLP	H	BEDFONT SPORTS	1-0		0-0	McKay	Campbell	Taylor	Hatfield	McKay	Murphy	Downs	Hayward	Douglin	Burns	Hough	Ayling	Panayi (5)	Jarman (6)	Smith (7)	63
11	10.09.2013	Tue	CCL PCC1	A	Horley Town	3-2		1-1	Douglin, Hough, Jarman	Campbell	Currie	Henry	Panayi	McKay	Ayling	Hayward	Douglin	Burns	Hough	Jarman	McGregor (7)	Smith (6)		35
12	14.09.2013	Sat	CCLP	H	CHESSINGTON & HOOK UNITED	0-1		0-1		Campbell	Currie	Henry	Panayi	McKay	Ayling	Hayward	Douglin	McGregor	Hough	Jarman	Jackson (8)	Myers (3)	Smith (9)	47
13	21.09.2013	Sat	FAV 2Q	H	WHYTELEAFE (AET)	2-3	1-1	0-0	Hough (2)	Campbell	Currie	Hatfield	Taylor	Murphy	Downs	Hayward	Douglin	Jarman	Hough	Ayling	McGregor (9)	McKay (11)	Smith (7)	66
14	24.09.2013	Tue	CCLP	H	WEMBLEY	0-2		0-0		Campbell	Currie	Hatfield	Taylor	McKay	Downs	Hayward	McGregor	Jarman	Hough	Ayling	Smith (2)	Myers (6)	Douglin (11)	39
15	28.09.2013	Sat	CCLP	A	Windsor	3-1		1-0	Hough (2, 1 pen), Jarman	Campbell	Currie	Hatfield	Panayi	Murphy	Downs	McGregor	Myers	Jarman	Hough	Ayling	Smith (2)	Hayward (6)	McKay (10)	247
16	05.10.2013	Sat	CCLP	H	BADSHOT LEA	3-4		0-1	McGregor, Jarman, Hough (Pen)	Campbell	Currie	Hatfield	Panayi	Murphy	Downs	McGregor	Ayling	Jarman	Hough	Myers	Douglin (11)	Hayward (6)	Smith (2)	63
17	09.10.2013	Wed	CCL PCC2	A	AFC Croydon Athletic	7-2		2-0	Douglin (3), Jarman (2), Hough, Panayi	Pierson	Currie	Hatfield	Douglin	Taylor	Ayling	Hayward	McGregor	Jarman	Hough	Myers	Dewar (2)	Lediju (7)	Panayi (10)	73
18	12.10.2013	Sat	CCLP	A	Farnham Town	0-3		0-2		Campbell	Currie	Hatfield	Douglin	Taylor	Ayling	Hayward	McGregor	Jarman	Hough	Myers	Dewar (11)	Downs (7)		35
19	15.10.2013	Tue	CCLP	H	RAYNES PARK VALE	2-2		1-1	Jarman (2)	Campbell	Currie	Hatfield	Taylor	Murphy	Downs	McGregor	Douglin	Jarman	Hough	Ayling	Cottee (7)			41
20	19.10.2013	Sat	CCLP	H	FRIMLEY GREEN	3-0		0-0	Jarman, Douglin, McGregor	Campbell	Currie	Hatfield	Taylor	Murphy	Downs	McGregor	Douglin	Jarman	Hough	Ayling	Cottee (10)	Smith (2)		63
21	22.10.2013	Tue	SSC 1	H	CHERTSEY TOWN	1-0		1-0	Cottee	Campbell	Currie	Hatfield	Panayi	McKay	Downs	McGregor	Douglin	Cottee	Dewar	Ayling	Jarman (10)			61
22	29.10.2013	Tue	SCC 2	H	CHIPSTEAD	4-2		2-1	Jarman, Douglin, Cottee, Hough	Campbell	Downs,J	Hatfield	Panayi	Murphy	Downs,C	Hayward	Douglin	Jarman	Hough	Cottee	Lediju (6)	Dewar (9)		92
23	02.11.2013	Sat	CCLP	A	Hanworth Villa	3-3		3-1	Hough (2, 1 pen), Murphy	Campbell	Downs,J	Hatfield	Taylor	Murphy	Downs,C	Cottee	Douglin	Jarman	Hough	Ayling	Currie (2)	Dewar (7)	Panayi (8)	70
24	23.11.2013	Sat	CCLP	A	Molesey	2-1		1-0	Jarman, McGregor	Campbell	Currie	Myers	Panayi	Murphy	Ayling	Hayward	Douglin	Jarman	Hough	Cottee	Downs,J (3)	McGregor (8)		68
25	26.11.2013	Tue	SSC 2	A	Chipstead	0-3		0-1		Campbell	Currie	Downs,J	Taylor	McKay	McGregor	Hayward	Douglin	Dewar	Hough	Cottee	Ayling (7)	Jarman (9)		64
26	30.11.2013	Sat	CCLP	H	MOLE VALLEY SCR	4-0		3-0	Cottee (2), Murphy, Haywood	Campbell	Currie	Downs,J	Panayi	Murphy	Downs,C	Hayward	Douglin	McGregor	Hough	Cottee	Dewar (3)	Taylor (4)	McKay (6)	69
27	07.12.2013	Sat	CCLP	A	Colliers Wood United	2-0		0-0	Douglin, Jarman	Campbell	Currie	Myers	Panayi	Murphy	Ayling	Hayward	Douglin	McGregor	Hough	Cottee	Dewar (6)	McKay (2)		37
28	14.12.2013	Sat	CCLP	A	Wembley	3-1		1-0	Jarman (2), Hough	Campbell	Currie	Myers	Panayi	Taylor	Ayling	Hayward	Douglin	Jarman	Hough	Cottee	Hatfield (8)	Downs,C (11)		44
29	28.12.2013	Sat	CCLP	H	HORLEY TOWN	5-3		1-0	Ayling, Cottee (2), Jarman, Hough	Campbell	Currie	Hatfield	Panayi	Taylor	Ayling	Downs,C	Douglin	Jarman	Hough	Cottee	McGregor (8)	Myers (3)	Dewar (9)	87
30	11.01.2014	Sat	CCLP	H	FARNHAM TOWN																			
31	14.01.2014	Tue	CCLP	A	Raynes Park Vale (1945)																			
32	18.01.2014	Sat	CCLP	A	Westfield																			
33	21.01.2014	Tue	CCL PCC3	A	South Park (1945)																			
34	25.01.2014	Sat	CCLP	H	ALTON TOWN																			
35	01.02.2014	Sat	CCLP	A	Frimley Green																			
36	04.02.2014	Tue	CCLP	H	HARTLEY WINTNEY (1945)																			
37	08.02.2014	Sat	CCLP	H	COVE																			
38	11.02.2014	Tue	CCLP	H	WINDSOR (1945)																			
39	15.02.2014	Sat	CCLP	A	Hartley Wintney																			
40	18.02.2014	Tue	CCLP	A	South Park (1945)																			
41	22.02.2014	Sat	CCLP	A	Badshot Lea																			
42	01.03.2014	Sat	CCLP	H	MOLESEY																			
43	08.03.2014	Sat	CCLP	H	COLLIERS WOOD UNITED																			
44	15.03.2014	Sat	CCLP	A	Horley Town																			
45	22.03.2014	Sat	CCLP	H	ASH UNITED																			
46	29.03.2014	Sat	CCLP	A	Bedfont Sports																			
47	05.04.2014	Sat	CCLP	H	CAMBERLEY TOWN																			
48	12.04.2014	Sat	CCLP	A	Chessington & Hook United																			
49	19.04.2014	Sat	CCLP	H	SOUTH PARK																			
50	21.04.2014	Mon	CCLP	A	Croydon (1130)																			
51	26.04.2014	Sat	CCLP	H	HANWORTH VILLA																			